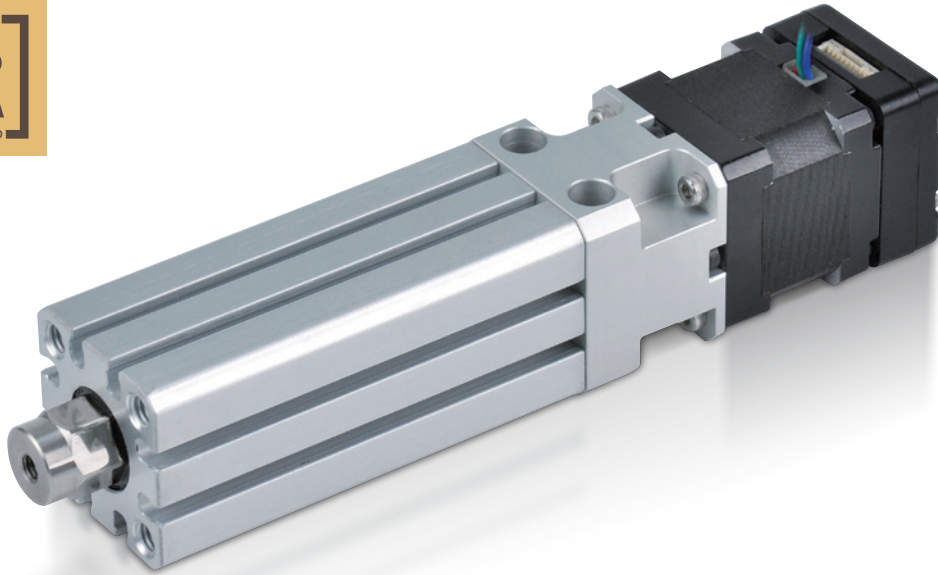


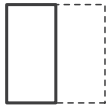
COMPACT ELECTRIC ACTUATOR

WITH MOTOR



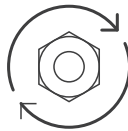
MEJQ series

Features



Space Saving

Countersunk hole and thread installation design
No need for extra slide rails or complex assembly



Non-Rotating

Hexagonal rods for non-rotating feature
Anti-rotation tolerance $\pm 0.7^\circ$



Application Industries

Covers automation, automotive, packaging, logistics, food, electronics, and more



Durability

Anodized aluminum body
Resistant to wear and corrosion



High Performance

Thrust $> 200\text{ N}$
Repeatability $< \pm 0.02\text{ mm}$



Non-pneumatic Environment

Electric drive avoids airborne dust
Suitable for environments without air pressure sources