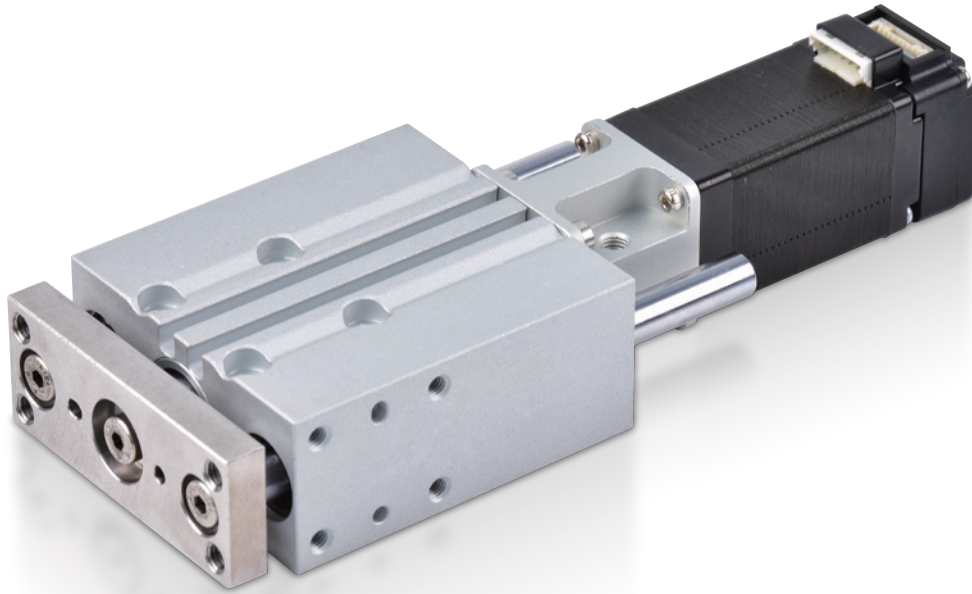


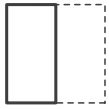
TWIN-GUIDED ELECTRIC ACTUATOR

WITH MOTOR



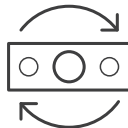
MEGS series

Features



Space Saving

Built-in linear bushings and integrated guide rods reduce the need for additional machine components



Non-Rotating

Guide rod design ensures non-rotation
Anti-rotation tolerance $\pm 0.06^\circ$



Application Industries

Covers automation, automotive, packaging, logistics, food, electronics, and more



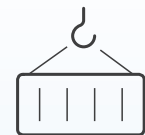
Durability

Anodized aluminum body
Resistant to wear and corrosion



High Performance

Max. thrust 270 N
Repeatability ± 0.02 mm



Withstands Offset Loads

Effectively supports lateral forces and torque, making it suitable for handling eccentric loads