

May 13rd , 2025

METI-32 Locating Pin Hole Direction Change

Thank you for supporting Mindman products. The design change will apply to the following models. Sorry for any inconvenience may occur. Please kindly understand and cooperate.

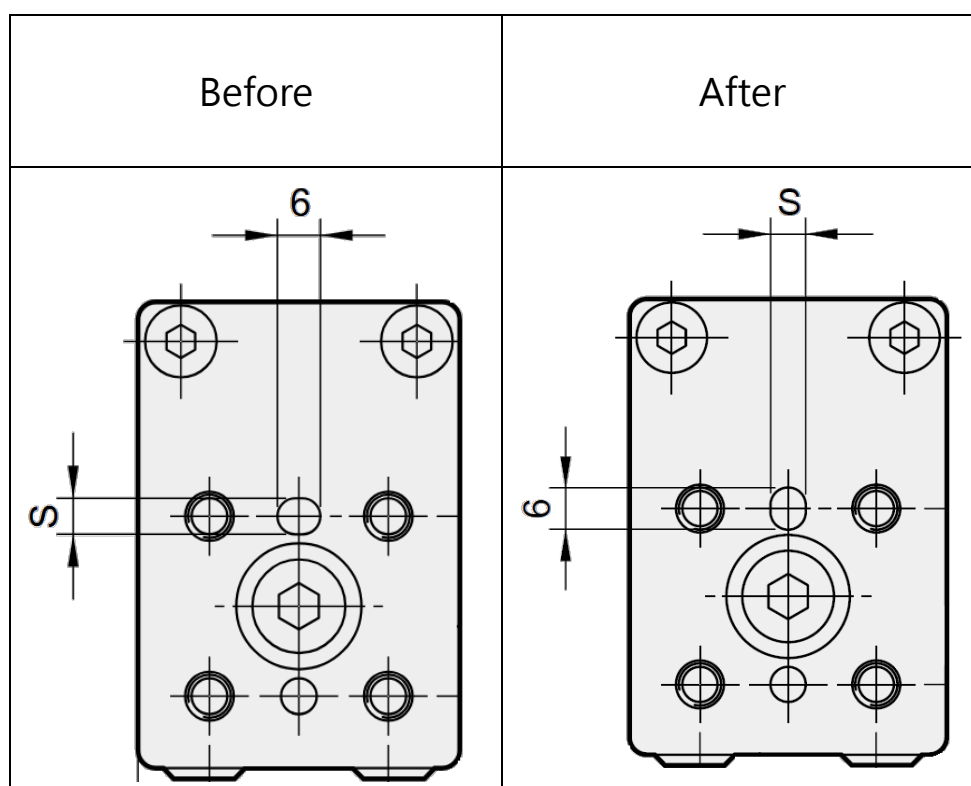
1. Model series

METI-32

2. Design change reason

Change the direction of the locating pin hole to enhance installation stability.

3. Change descriptions



4. Effective date

It takes effect immediately.

5. If there is any question, please contact our sales department.