

Jan 23rd , 2025

MEJQ-20 Locating Pin Hole Position and Counterbore Depth Change

Thank you for supporting Mindman products. The design change will apply to the following models. Sorry for any inconvenience may occur. Please kindly understand and cooperate.

1. Model series

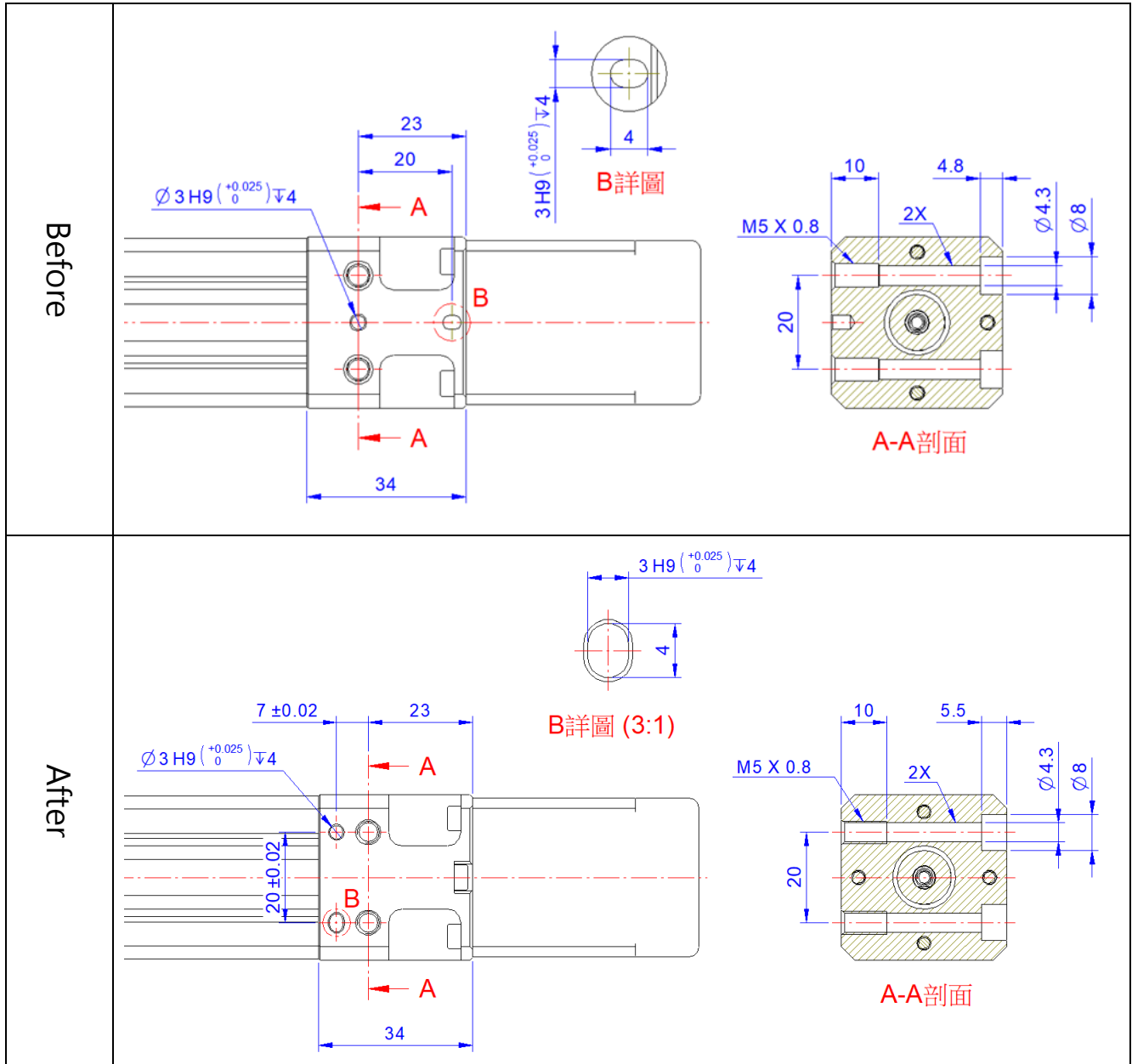
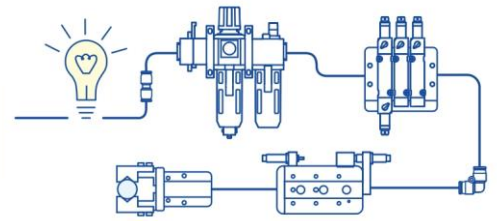
MEJQ-20

2. Design change reason

To enhance product stability and respond to market feedback, an additional tightening bolt has been added to the motor mounting bracket, and the position of the locating pin holes have been changed, along with an increased depth of the counterbore.

3. Change descriptions

As shown on next page.



4. Effective date

It takes effect immediately.

5. If there is any question, please contact our sales department.