

Jan. 9<sup>th</sup>, 2025

## MP47, MP48E series order codes cancel the M5 internal thread option

Thank you for supporting Mindman products. The design change will be applied to the following models. We're sorry for any inconvenience in advance, and thank you for the understanding and cooperation.

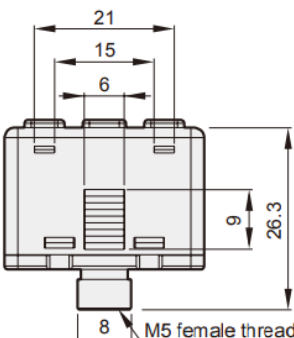
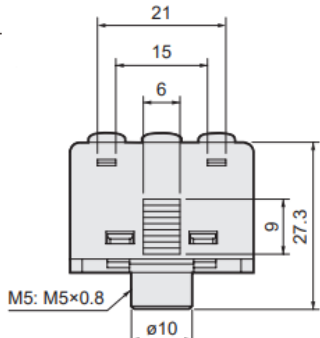
1. Model series

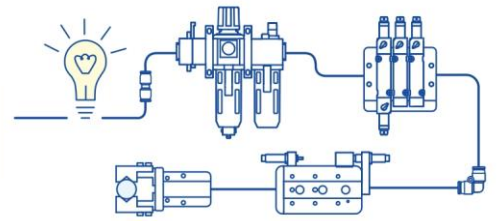
MP47, MP48E series.

2. Cause of Design Change

Specification streamlining.

3. Effects of Design Change

Original		Modified
<p><b>Order example</b></p> <p><b>MP *** – 01 – F1</b></p> <p>PRESSURE PORT  <b>F1:</b> R1/8, M5×0.8  <b>F2:</b> NPT1/8, #10-32UNF  <b>F3:</b> G1/8(BSPP), M5×0.8  <b>M5:</b> M5 female thread</p>		<p><b>Order example</b></p> <p><b>MP *** – 01 – F1</b></p> <p>PRESSURE PORT  <b>F1:</b> R1/8, M5×0.8  <b>F2:</b> NPT1/8, #10-32UNF  <b>F3:</b> G1/8(BSPP), M5×0.8  <b>*Please contact sales department for additional options</b></p>
<p><b>MP47</b></p> 	<p><b>MP48E</b></p> 	<p><b>MP47 · MP48E</b></p> <p>Cancel M5 specification for exterior dimensions drawings</p>



4. Implementation Date

Effective immediately with sequential replacement of current product line.

5. Please contact our sales department for further information.